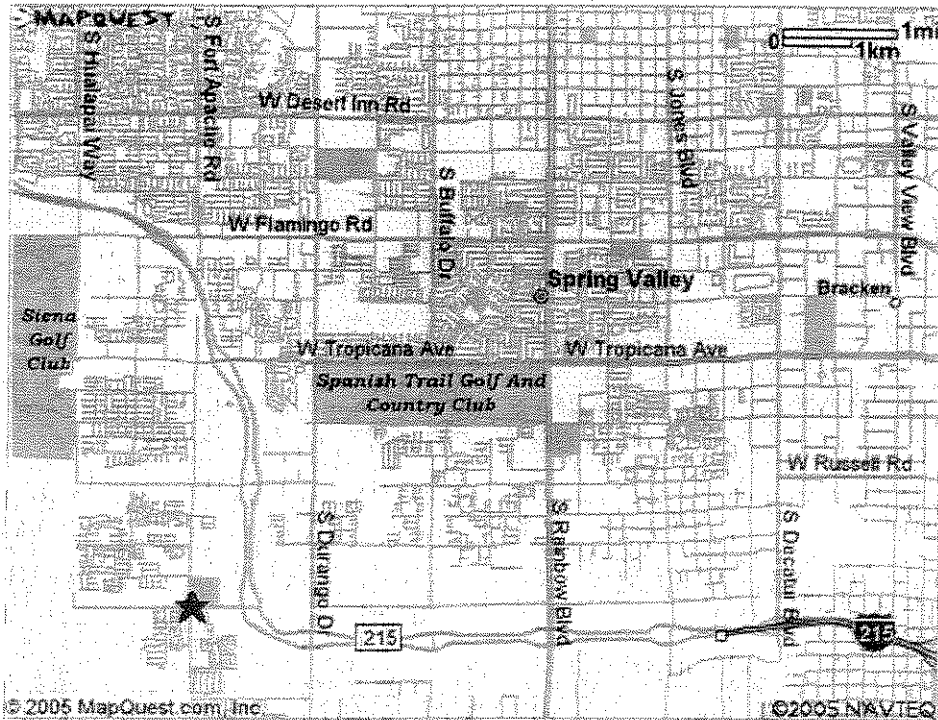


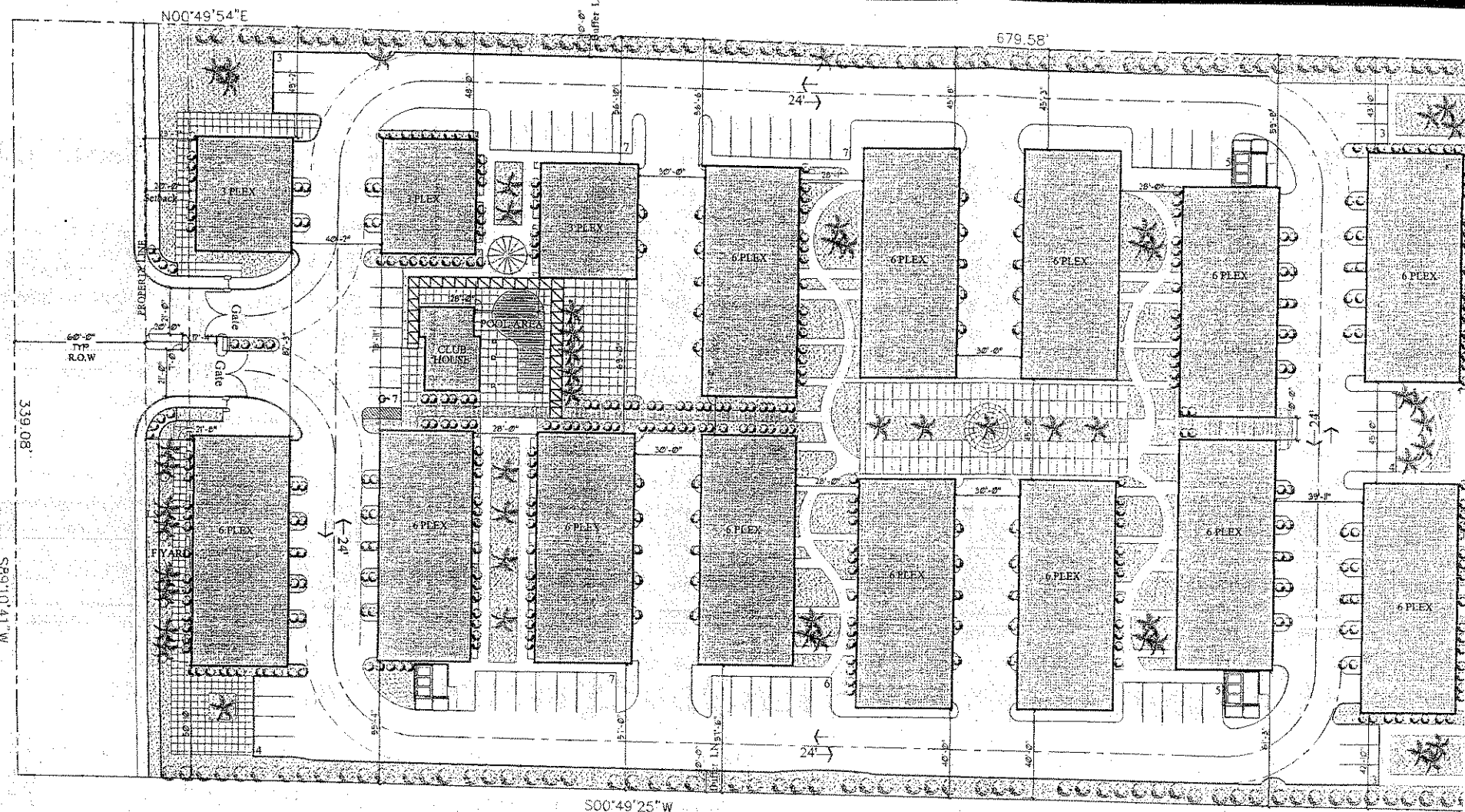
Aerial Map

★ S Fort Apache Rd & W Sunset Rd Las Vegas, NV 89101, US



SUNSET PINES

SUNSET ROAD



### MULTI FAMILY SITE INFORMATION

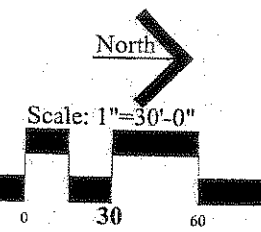
<b>ZONING</b> - Clark County APN# 163-31-801-010	<b>SETBACKS</b> Front Side 20' East/West Side 10' Bldg - Bldg 10' MIN	<b>PARKING REQUIREMENTS</b> On Site Parking: 2-Bedrooms 61x175=106.75 3-Bedrooms 26x2=52 Guest Parking: 1 per 5 units = 18 <b>TOTALS</b> 177
<b>AREA</b> (Approximate): 5 acres	<b>Required Open Space:</b> 87 units x 200 s. ft. = 0.39 acres	<b>Parking Provided:</b> Uncovered Parking 61 Covered Parking 8 x 18 + 4 x 8 = 116
<b>BUILDINGS</b> Buildings # 16 Units # 87	<b>Open Space Provided:</b> 3.47 acres	<b>Parking Ratio</b> 2.08/ unit
<b>HEIGHT</b> Maximum Allowed: 35 ft. Provided: 35 ft.	<b>Lot Coverage:</b> 30.4%	<b>H.C. Parking Required (2% of 18)</b> 1 <b>H.C. Parking Provided</b> 1
<b>DENSITY:</b> 17.4 Units/Acre		

# Mountain View Homes

@ Clark County, Nevada

Conceptual Site Plan

Date: March 14, 2005  
Project Number: 104459



COPYRIGHT 2004 PERL

